



Statistics



Lesson sequence

- Draw line graphs
- Read and interpret line graphs
- Read and interpret tables
- Two way tables
- Read and interpret timetables

Vocabulary

- Line graph
 - X axis
 - Y axis
- Two way tables
- Timetables
- Interpret
 - Data
 - Scales
 - Intervals
- Continuous data

Sticky learning

New Knowledge

- To know that a line graph displays quantitative values over a specified time interval
- To know the different way two way tables and timetables are used in daily life
- To know how line graphs can be used to estimate data

New Skills

- To complete, read and interpret information in tables, including timetables
- To solve comparison, sum and difference problems using information presented in a line graph
- To know when to use specific representations of data

Concept Links/Prior Knowledge

- To interpret and present discrete and continuous data using appropriate graphical methods, including bar charts and time graphs
- To solve comparison, sum and difference problems using information presented in bar charts, pictograms, tables and other graphs
- To use a greater range of scales in their representations
- To relate the graphical representation of data to recording change over time
- To know that a time graph shows a changing of data over time



Pictorial representations

Two way table

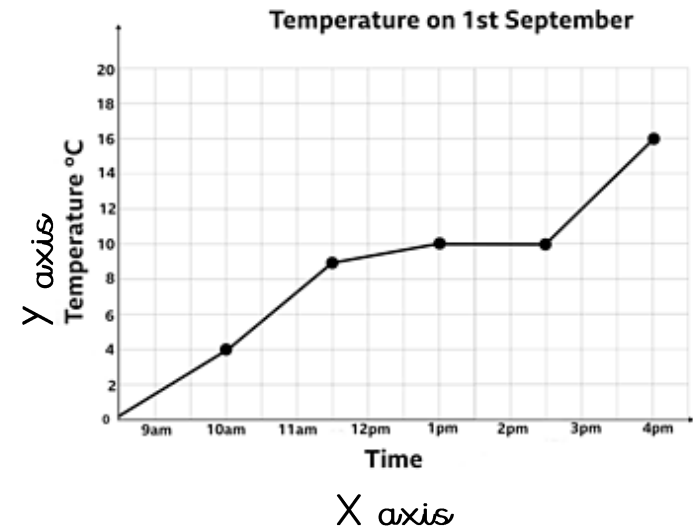
	Brown Hair	Black Hair	Blonde Hair	Total
Boys	6	6	5	17
Girls	1	9	3	13
Total	7	15	8	30

Train timetable



Leeds	12:15	12:45	13:15	13:45	14:15
Wakefield	12:28	12:58	13:28	13:58	14:28
Doncaster	12:47	13:19	13:47	14:19	14:47
Grantham	13:18	—	14:18	—	15:18
Peterborough	—	14:10	—	15:10	—
Stevenage	14:04	—	15:04	—	16:04
London	14:31	15:01	15:31	16:01	16:31

Line graph



Data table - line graph

TEMPERATURE °C	4	9	10	10	16
TIME	10	11.30am	1pm	2.30pm	4pm