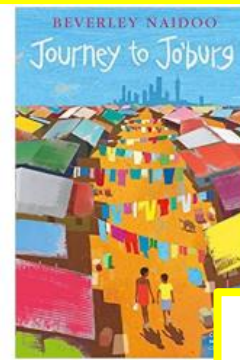


# Journey to Jo'Burg by Beverley Naidoo

Purpose: **Entertain** **Inform** **Persuade** **Discuss**

- Non-chronological reports
- Newspaper Article
- Balanced argument
- Persuasive Letters
- Setting Description



Name of the book: Journey to Jo'Burg

Author: Beverley Naidoo

Illustrator : Lisa Kopper

Date published: 2008

## Key vocabulary

**Apartheid** - a former policy of segregation and political and economic discrimination against non-European groups in the Republic of South Africa.

**Racism** - the belief in the natural superiority of one race over another  
**Segregation** - the practice or policy of separating a race, class, or group from the rest of society.

**Poverty** - not having enough money for basic needs such as food, water, shelter, or toilets.

**Prejudice** - judging someone or having an idea about them before you actually know anything about them



Vocabulary

Inference

Predict

Explain

Retrieve

Summarise

## Plot

This is the story of love, commitment and the flowering of the human spirit against the background of South Africa's apartheid. Frightened that their baby sister Dineo will die, thirteen-year-old Naledi and her younger brother Tiro run away from their grandmother to Johannesburg to find their mother, who works there as a maid. Their journey illustrates at every turn the grim realities of apartheid - the pass laws, racism, the breakdown of family life. The opulence of the white "Madam's" house contrasts starkly with the reality that Naledi and Tiro face - that their baby sister is suffering from starvation, not an incurable disease.

## Themes and Links:

- Bravery
- Courage
- Family
- Journeys
- Children in need

## Writing

- Understanding and using formal and informal writing
- Working on "show not tell" when describing a setting or character
- Using persuasive language
- Emotive language
- To understand and use the subjunctive form
- To use unusual verb tense aspects correctly (e.g. use of auxillary verbs in continuous and perfect aspects etc)

## SPaG

- Use a wider range of punctuation in all areas of writing, commas to clarify meaning and indicate parenthesis, brackets, dashes, hyphens, semi-colons, colons and ellipsis.
- To recognise and use the spellings of homophones accurately
- Use grammatical devices such as converting nouns/adjectives into verbs, e.g. intense becomes intensify and using expanded noun phrases to convey information

